

PLEASE NOTE:

This Powerpoint presentation was given at the May 17, 2010 meeting of the Walla Walla Watershed Management Partnership. The proposed language in this Powerpoint received comments and feedback during the meeting, with revisions of the vision statement, goals and objectives, principles for focus, metrics of success, and draft strategic actions documented in the May 17th meeting notes.

For more information, contact Cathy Schaeffer at 509.524.5216 or cathy.schaeffer@wwcc.edu or visit www.wallawallawatershed.org/calendar and click on the May 17th PAG meeting.

Walla Walla Watershed Management Partnership

Policy Advisory Group

Meeting Agenda

Date: Monday, May 17, 2010

Time: 3:00PM – 5:00PM (two hours)

Location: Walla Walla Community College Water and Environmental Center
500 Tausick Way, Walla Walla, WA

3:00 p.m. Policy Advisory Group

- A. **Introductions and Review: 04/26/2010 Meeting Notes**
Led by Roland Schirman, PAG Chair

- B. **Discussion Items**
 - 1. Review compilation of PAG comments / feedback (homework from 04/26/10):
 - a) Vision statement core elements
 - b) Goals and Objectives: alignment and additional objectives
 - 2. Review parameters for Partnership focus and metrics of success
 - 3. Finalize suggested revisions of the working vision statement
 - 4. Finalize recommendations for goals and objectives, parameters for focus and success
 - 5. Introduction to the development of draft strategic actions

- C. **Staff Updates on Partnership Activities**

- D. **Other Business**

- E. **Adjourn committee at 5:00pm**

Appointed Members: Hedia Adelsman, Rhonda Barker, Fred Bennett, Mike Bireley, Phil Brick, Ron Brown, Andrea Burkhart, Bob Carson, Amanda Cronin, Nichole Curet, Diane Driscoll, Stuart Durfee, Greg Graham, Paul Hartwig, Roger Lizut, Kay Mead, Tom Page, Eric Quaempts, Mike Rassbach, Yancey Reser, Roland Schirman, Craig Sivley, Hal Thomas, Mark Wachtel, Gene Warren, Paul Wemhoener, William "Tad" Willis, Brian Wolcott.

Please visit our website calendar for upcoming meeting information:

www.wallawallawatershed.org/calendar

PAG Comments / Feedback

April 26th Homework

**Walla Walla Watershed
Management Partnership**

Working Vision Statement

The vision of the Walla Walla Watershed Management Partnership is to manage water locally to meet the needs of fish, farms and people in the watershed through 2019.

(Approved as working vision statement 04/06/2010)

Core elements of this vision statement:

- local water management
- needs of fish
- needs of farms
- needs of people
- watershed scale/location
- ten-year timeframe (through 2019)

Vision Statement Core Elements

Core Elements suggested in April 26th PAG meeting

- innovative pilot
- timeframe oriented toward looking beyond legislation term (ie longer than ten years)
- new way of managing water
- healthy river system
- Tribal First Foods
- mutual respect
- Equitable
- responsibility for actions
- social needs
- Storage
- game needs

Core elements of working vision statement:

- local water management
- needs of fish
- needs of farms
- needs of people
- watershed scale/location
- ten-year timeframe (through 2019)

Compilation of Responses

Eight Core Vision Elements Exercise

- Innovative pilot / New way of managing water / Local water management
- Meeting the needs of people, farms and fish / Allow fish and farms to thrive
 - Flows for fish needs met
 - Flexibility for farmers
 - Local needs met
 - ✓ Farm irrigation needs met
 - ✓ Municipality needs met
 - ✓ Recreational needs met
 - ✓ Social needs met
- Provide forum for concerns and solutions
- Provide process to implement solutions
- Enhance communication, cooperation, understanding
- Ten year timeframe for planning with 4 year updates
- Healthy river system capable of equitably sustaining its:
 - Cultures and communities including Tribal First Foods, agriculture, recreation, industry
 - Amenities that enrich the lives of all residents
- Community members who
 - Display a high regard of mutual respect
 - Reflect public and private interests
 - Willingly accept responsibility for their actions
- Watershed quality improved to actually decrease need for additional instream flow
- Storage

Other comments about vision statement

Compilation of Responses

1. Not necessary to have a long term time frame; as experience and short term successes are achieved, expanding the vision with a time frame is appropriate.
2. Vision should be encompassing without naming specifics, which somehow precludes by omission – the peril of naming specifics may be that it would then be used to ‘qualify’ a proposal or plan for action or funding.
3. A vision for the Partnership must embody local needs, including reducing uncertainty to growers, fair and equitable representation from landowners, keeping farmland in production rather than encouraging housing developments and other undesirable land use changes, and protecting upstream water users whose water management tools have been compromised, specifically those with high value crops.
4. Our hard work and collaboration is designed to have everlasting effects for the restoration of flows, aquatic species, and water quality measures for the benefit of future generations, sustainability of agriculture, and reliability and certainty for the ecology, economy, and social welfare of all who share the Walla Walla River.
5. A vision statement outlines where an organization wants to be, and a mission statement talks about how the organization will get to where it wants to be.
6. One way to think about a vision statement is that all basin partners and plans can share a vision; the mission is what each group would focus on to achieve this.

Sorting Core Elements (vision)

Describing the Destination, i.e. “Where the Partnership wants to be?”

More fitting for Vision Statement

- Meeting the needs of people/farms/fish, allowing fish and farms to thrive
 - Flows for fish needs met
 - Flexibility for farmers
 - Local needs met (farm irrigation, municipality, recreational, social)
- Healthy river system capable of equitably sustaining its:
 - Cultures and communities including Tribal First Foods, agriculture, recreation, industry
 - Amenities that enrich the lives of residents
- Scale/location/timeframe

Describing “How” of Partnership efforts

More fitting for mission/actions

- New way of managing water (water banking and flow-from-flexibility measures)
- Provide forum for concerns, solutions
- Provide process to implement solutions
- Enhance communication, cooperation, understanding
- Watershed quality improved to actually decrease need for additional stream flow
- Storage
- Voluntary

“Destination” or “How” ?? May be in vision, mission, neither/both

Community members who:

- Display a high regard of mutual respect
- Reflect public and private interests
- Willingly accept responsibility for actions

Innovative pilot

Local Water Management

Mutual Respect

Equitable

Discussion:
Suggest Revisions to Vision Statement?

Goals and Objectives Exercise

Draft Goals from April 26th PAG meeting

1. Develop and sustain collaborative partnerships to provide innovative, adaptive solutions to Walla Walla's complex water allocation challenges.
2. Manage water with consideration of all basin needs, including environmental, agricultural, economic and cultural.
3. Successfully implement innovative water management actions at the basin level.
4. Educate the community and water users about creative opportunities to meet the basin's water management needs.

The Partnership's goals and objectives should be based on its values statement:
building cooperation in implementing innovative water management for the benefit of fish, farms and people. (RCW 90.92.040)

Compilation of Responses

Goals and Objectives Exercise

1. It was suggested to somehow recognize partners already successful at working in this area.
2. Is there a definition to “significantly and measurable improve flows” and perhaps this would come under metrics of success?
3. In an attempt to understand and define the overallocation of water in this basin, should a goal or objective be to get a handle on the actual paper allocation of water rights and actual need/use of water.
4. The Goals are broad enough as written to be effective, but what are missing are enough specific objectives to support the goals. Strategic actions that support the objectives need to be developed. I believe that each objective needs to have a strategic action that will investigate/evaluate the relative or specific success of the objective, preferably each year. This could be a function of the PAG or WRP (or both).
5. It was suggested to rearrange the goals, moving Goal 3 into the first position and Goal 1 into the third position, giving priority ranking to the goals. As well, there were various suggestions to combine and reposition objectives under each goal.
6. A functional hierarchy was suggested, to incorporate the scope (geographical, temporal and presence elements), environmental and economic components of a strategic plan. Reorganization of goals and objectives under this hierarchy was advised.

Proposed Goals and Objectives

incorporating responses and recommendations

Goal 1: Successfully implement innovative water management actions at the basin level.

Objective 1.1: Implement water banking transactions to reduce water withdrawals and encourage water conservation in priority stream reaches, protect participants from future relinquishment, and enable reallocation of water.

Objective 1.2: Enable flexible water management for water users through approval and implementation of local water plans in which stream flow is significantly and measurably improved, groundwater use is sustainably managed, and other water right holders are not involuntarily impaired.

Goal 2: Manage water with consideration of all basin needs, including environmental, agricultural, economic and cultural.

Objective 2.1: Support implementation of Walla Walla Watershed Plan actions.

Objective 2.2: Increase access to, and utility of, WRIA 32 water right information.

Draft Strategic Actions support each objective

Proposed Goals and Objectives

incorporating responses and recommendations

Goal 3: Develop and sustain collaborative partnerships to provide innovative, adaptive solutions to Walla Walla's complex water allocation challenges.

Objective 3:1: Build and maintain working relationships with partners, stakeholders and governments to improve basin capacity for innovation and collaboration in problem-solving.

Objective 3:2: Secure funding to support Walla Walla Watershed Management Partnership operations, implementation of strategic actions, and leverage resources for watershed projects.

Objective 3.3: Demonstrate success in modeling collaborative, local water management under RCW 90.92.

Goal 4: Educate water users and stakeholders about unique Partnership programs for water management.

Objective 4.1: Develop and implement a communications and outreach plan for Partnership programs.

Objective 4.2: Partner to improve community education and public information on water management.

Draft Strategic Actions support each objective

Discussion:
Working **Goals and Objectives**
For Partnership Board Approval

Parameters for focusing Partnership Efforts

Positioning the Partnership to know what to take on...

- Focus of Partnership efforts will be consistent with RCW 90.92.
- The Partnership will build on limited number of major goals and a moderate list of objectives, with draft strategic actions identified to address highest priorities from 2009 to 2012 .
- Identify specific steps to implement draft strategic actions, considering previously completed plans and partner workplans to implement projects.
- Provide highest level of effort where actions are most warranted, prioritizing limited resources to meet goals.
- Provide for further clarification and refinement over time, with adaptive management to identify more actions in the future.

Partnership Values Statement:

Building cooperation in implementing innovative water management for the benefit of fish, farms and people. (RCW 90.92.040)

Review / Discussion:
Principles for Partnership Focus of Efforts
for Partnership Board Approval

Metrics of Partnership Success

Positioning the Partnership to recognize success...

- Metrics of success, when well-defined and specific, will focus Partnership priorities. Consider identifying:
 - ✓ Metrics: what you measure
 - ✓ Outputs: quantifiable program accomplishments from each metric
 - ✓ Outcomes: the short- and long-term effects of our strategies to achieving objectives
 - ✓ Impacts: the long-term & aggregated effect of our sustained effort, goals
- What you measure get's done – choose metrics based on established Partnership goals and objectives
- Consider presentation of metrics (how do we show-and-tell about our success?)
- Wrong measures may cause havoc
- Identify a manageable number of metrics that can be understood within and outside the Partnership
- Consider what measures mean the most to stakeholders, partners, legislators, agencies, and interest groups (ag, environmental, citizen, government)
- Look at what measures of failure may be turned upside-down into measures of success.

Metrics of Partnership Success

Social, Political, Biological, Financial metrics.... Others?

Format for identifying metrics (map, table, report):

Metric (Water Banking)

Outputs (# of water banking agreement participants)

Outcomes (flow contributions in critical reaches when most needed by fish) – can be “graded” as excellent, very good, etc.

Impacts (delisting of fish species)

Indicators of Success – Partnership may play a role in some basinwide outcomes and impacts, but cannot take all the credit or responsibility for success

Trends – Partnership may participate in positive, negative, or static trends: evaluation, incorporating feedback collected, etc.

Suggested Working Metrics of Partnership Success

1. Number of water banking transactions completed by 2012 (when first report to legislature is due) and by 2019, including tracking of activities in priority stream reaches, participant protection from relinquishment, efforts to promote conservation, and quantity of water reallocated through the exempt well mitigation exchange or water banking program.
2. Number of local water plans approved and implemented by 2012 and by 2019, including tracking flows, groundwater impacts reported, and impairment issues.
3. Percentage completion of Watershed Plan actions (was 23% complete in 2009, suggesting we identify 50% complete by 2012). These include actions to improve water quality (achieve TMDL goals), increase SAR and ASR, monitoring, improve flows, and other water management activities.
4. Complete organization of 90% of WRIA 32 water right information to facilitate program implementation and public access.
5. Maintain 85% attendance and participation of Partnership Board members, PAG members and WRP members.
6. Secure funding for 2011-2019 Partnership operations.
7. Achieve sufficient success in piloting local water management authorities to achieve permanent local water management board status after 2019.

Review / Discussion:
***Working* Metrics of Partnership Success**
for Partnership Board Approval

Draft Strategic Actions

- Build upon the watershed plan in WRIA 32 (Also DIP and SRSRB)
- Approved strategic actions can be organized into a work plan / project plans to align tasks with Partnership objectives.
- Implementation of strategic actions may serve to direct Partnership priorities and can be tracked as benchmarks for success.
- Development of draft strategic actions in 2010 should focus on identifying actions appropriate for Partnership implementation given current conditions (through 2012), recognizing that more actions can be identified in the future and revised in final strategic actions in the future (2013).

Review / Discussion:

WRIA 32 Watershed Plan /DIP






SRSRB PLAN

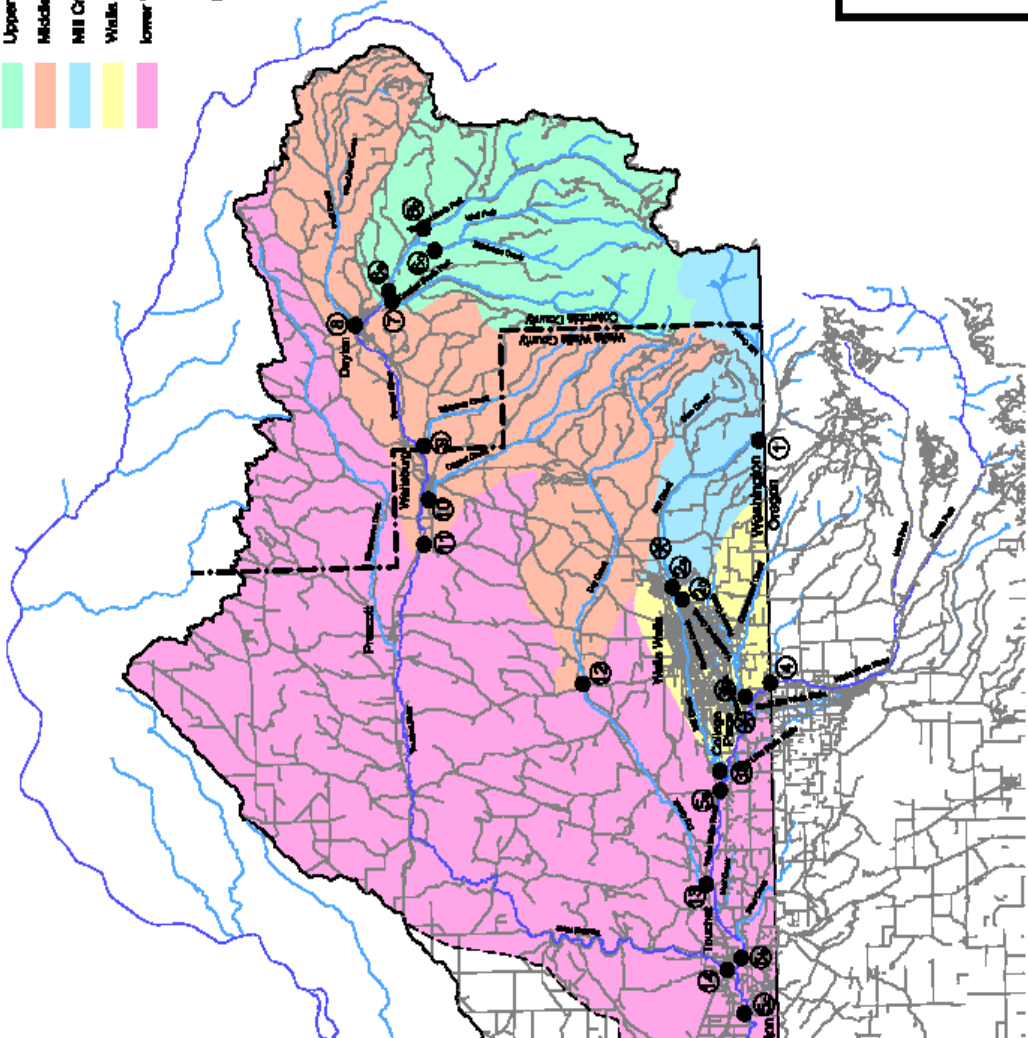
WRIA 32 Watershed Plan and DIP

- Developed by WRIA 32 Watershed Planning Unit from 2001 to 2005 with stakeholder representation (26 voting members) and agency advise (Ecology, WDFW, Health to a lesser degree) on WA side
- Watershed Plan adopted by County Commissions (Columbia and Walla Walla) in 2005
- Detailed Implementation Plan (DIP) developed in 2006, integrated with Salmon Recovery Plan
- Instream flow, water quantity (storage), water quality, habitat; Implementation Areas, New Appropriations Flows (Instream Flow) recommendations for 173-532 WAC
- Recognized as statewide model for watershed planning success

Implementation Areas:

- Upper Touchet
- Middle Touchet
- Mill Creek
- Walla Walla / College Place
- Lower Walla Walla / Touchet

-  WRIA 32 Boundary
-  Not included watershed boundary
-  River
-  Stream
-  Roads



-  Management Points
- 1 Mill Cr. @ Kooskozeide
- 2 Mill Cr. @ Yellowhawk
- 3 Yellowhawk downstream of Mill Creek Diversion
- 4 Mill Cr. @ Mouth
- 5 Yellowhawk @ Mouth
- 6 Walla Walla R. at State line (measurement point)
- 7 Walla Walla R. at Dabour Rd
- 8 Walla Walla R. upstream of Touchet Confluence
- 9 Walla Walla R. downstream of Touchet Confluence
- 10 N. Fork Touchet R. upstream of S. Fork
- 11 N. Fork Touchet R. upstream of Wolf Fork
- 12 Wolf Creek upstream of N. Fork Confluence
- 13 S. Fork Touchet R. upstream of N. Fork Confluence
- 14 Touchet R. upstream of N. Fork Confluence
- 15 Patt Cr. @ Mouth
- 16 Whiskey Cr. @ Mouth
- 17 Coppel Cr. @ Mouth
- 18 Touchet R. downstream of Wellsburg Jet Boats
- 19 Dry Cr. @ Hwy 125
- 20 Dry Cr. @ Mouth
- 21 Touchet R. @ Mouth
- 22 Other Proposed MP's

EXHIBIT ES-1
Implementation Areas and
Management Points
Walla Walla Watershed
 May 2005



WRIA 32 Watershed Plan and DIP

Basinwide Planning Objectives

- General
- Flow/Quantity
- Quality
- Habitat

Objectives and Strategies for:

- Groundwater Management
- Surface Water Quality Management
- Groundwater Quality Management
- Aquatic Habitat Management

Implementation Area Strategies

- Upper Touchet
- Middle Touchet
- Mill Creek
- Walla Walla / College Place
- Lower Walla Walla / Lower Touchet

Salmon Recovery Plan

- Regional (WRIA 32 and WRIA 35) completed with stakeholder and Tribal board leadership, and technical team recommendations, as a science-based, community supported strategy for salmon recovery
- Addressed listed fish species and species of interest: Habitat, Hatchery, Harvest and Hydropower
- Identified priorities for Restoration (needs changes), Protection (needs to avoid changes), and Imminent Threats in major spawning areas (MSA) and minor spawning areas (mSA) for salmon/steelhead
- Established priorities for recommendations of grant funding (Salmon Recovery Funding Board) for project and assessment work
- Plan completed in 2005 and submitted to NOAA for integration with PNW recovery plans and decisions on federal actions
- Three year workplan (2009-2011) guides Snake River region actions

Salmon Recovery Plan

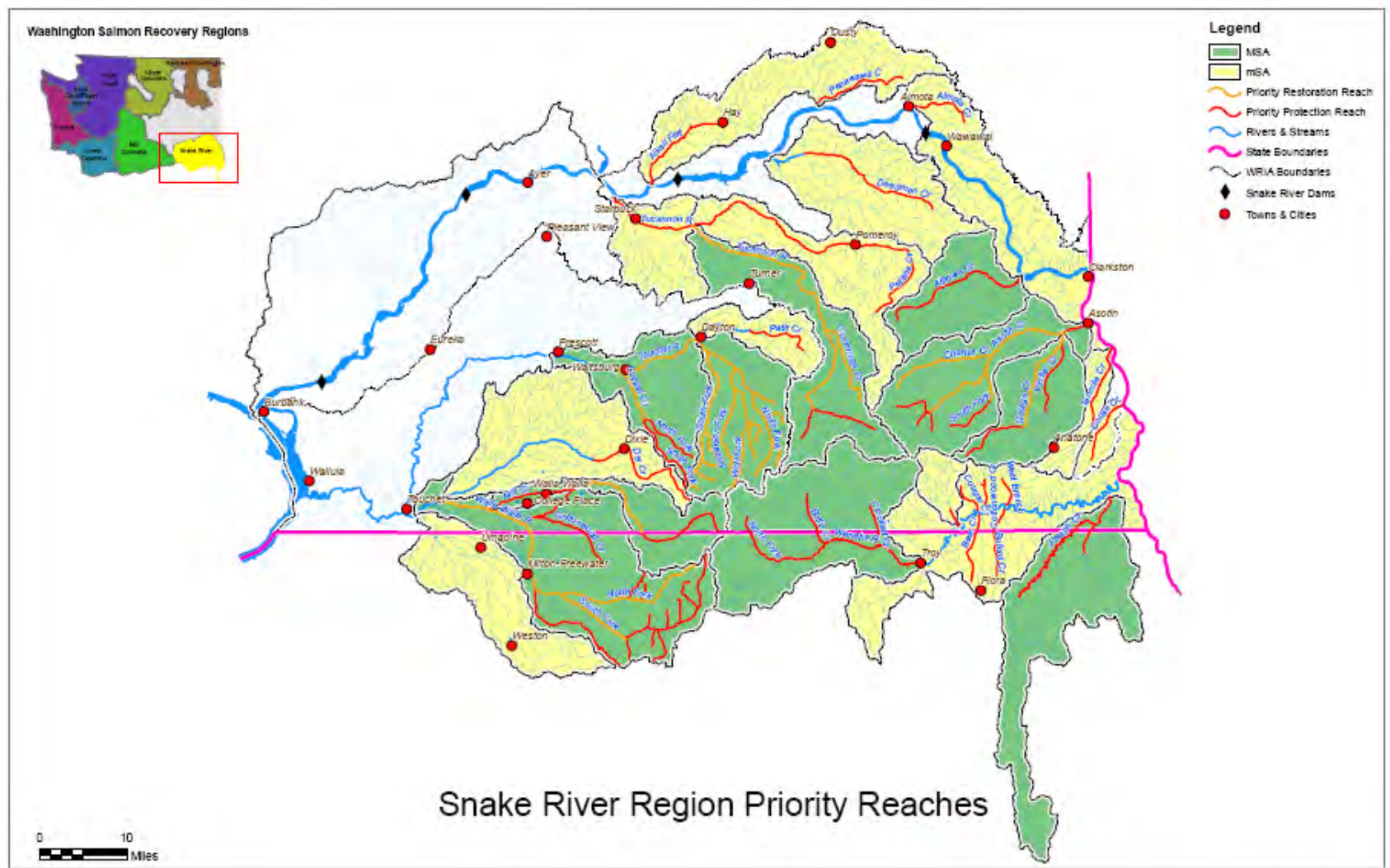


Figure 1. The Snake River Region Priority Reaches (Snake River Salmon Recovery Plan 2005).

Salmon Recovery Plan

General Project Categories for Priority Restoration Reaches Include:

- Restore and Protect Floodplain and Riparian Function
 - o Easements (CREP Conservation)
 - o Remove and modify river dikes that constrict floodplain function
 - o Control noxious weeds that reduce riparian function
 - o Riparian restoration projects (Fencing, planting, stock relocation)
 - o Land use and planning
- Restore Habitat Complexity
 - o Enhance stream channel complexity (wood placement, structures)
 - o Extend stream length (Meander projects, & side channel construction)
- Reduce Fine Sediments
 - o Upland BMPs (Direct seed, grass waterways, sediment ponds, native grass, & reforestation)
 - o Fine sediment routing assessment and Implementation (Roadway maintenance, ephemeral stream, stream fords management, storm water)
- Remove Imminent Threats
 - o Assess and remove / modify fish passage barriers
 - o Screen and meter stream diversions
- Maintain or Restore In-stream Flow
 - o Conduct water efficiency
 - o Springhead inventory and protection
 - o Aquifer Recharge (Currently only in WRIA 32, rural road storm water, winter flows, etc. – may need to evaluate WRIA 35)
 - o Assess and enhance stream flows

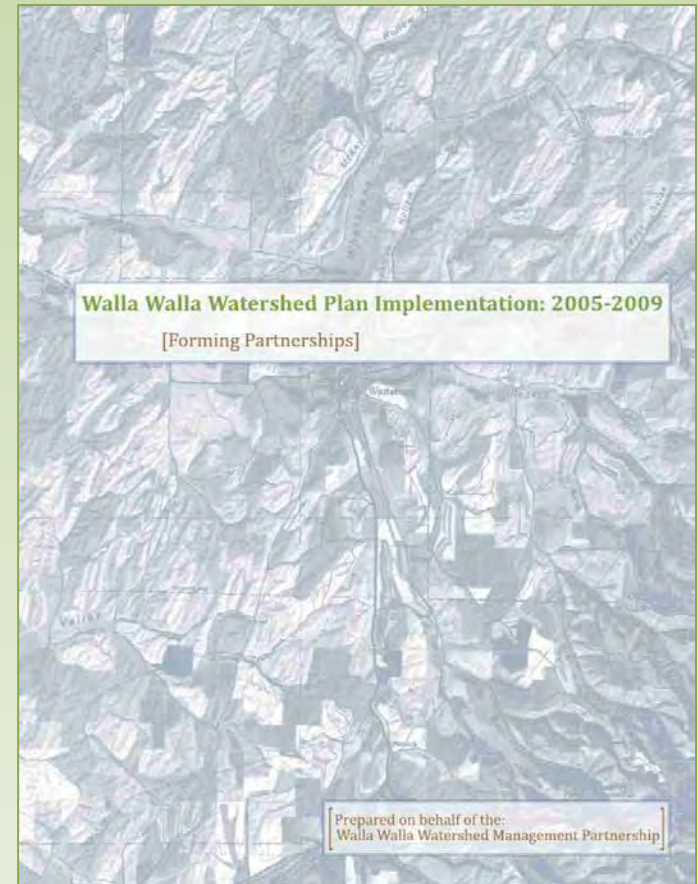
Salmon Recovery Plan

General Project Categories for Priority Protection Reaches

- Protect Floodplain and Riparian Function
 - o Conservation Easements
 - o Control noxious weeds that reduce riparian function
 - o Riparian restoration projects (Fencing, planting, stock relocation, & alternative water developments)
- Reduce Fine Sediments
 - o Upland BMPs (Direct seed, grass waterways, sediment ponds, native grass)
 - o Fine sediment routing assessment and Implementation (Roadway maintenance, ephemeral stream, stream fords)
- Remove Imminent Threats
 - o Assess and remove fish passage barriers
 - o Screen and meter stream diversions
- Maintain or Restore In-stream Flow
 - o Conduct water efficiency
 - o Springhead inventory and protection
 - o Assess and enhance stream flows
- Water Quality
 - o Maintain or improve water quality consistent with TMDL plans

Draft Strategic Actions

- Watershed Plan and DIP priorities
- 2009 Performance Report identifies progress in implementation 2005-2009
- Development of Partnership draft strategic actions may include stakeholder participation/outreach actions, financial/funding actions, and water user actions
- Partnership draft strategic actions: 2009-2012



Proposed Draft Strategic Actions

Goal 1: Successfully implement innovative water management actions at the basin level.

Objective 1.1: Implement water banking transactions to reduce water withdrawals and encourage water conservation in priority stream reaches, protect participants from future relinquishment, and enable reallocation of water.

Proposed draft strategic action 1.1: Implement up to 40 water banking transactions by 2012, and up to 100 water banking transactions by 2019 with tracking of activities in priority stream reaches, participant protection from relinquishment, conservation promotion, and reallocation of water through the mitigation exchange or water banking program.

Objective 1.2: Enable flexible water management for water users through approval and implementation of local water plans in which stream flow is significantly and measurably improved, groundwater use is sustainably managed, and other water right holders are not involuntarily impaired.

Proposed draft strategic action 1.2: Approve and implement up to four local water plans by 2012, and up to 10 local water plans by 2019, with measures of success to include tracking flows, groundwater, and impairment.

Proposed Draft Strategic Actions

Goal 2: Manage water with consideration of all basin needs, including environmental, agricultural, economic and cultural.

Objective 2.1: Support implementation of Walla Walla Watershed Plan actions.

Proposed draft strategic action 2.1: Complete 50% of Walla Walla Watershed Plan (2005) actions by 2012. Tracking of progress will include listing actions, lead, description, schedule and cost. (Note: Watershed Plan actions are basinwide and comprehensive, including improve water quality (achieve TMDL goals), increase SAR and ASR, monitoring, improve stream flows, and other water management activities.)

Objective 2.2: Increase access to, and utility of, WRIA 32 water right information .

Proposed draft strategic action 2.2: Organize WRIA 32 water right information to facilitate program implementation and public access.

Goal 3: Develop and sustain collaborative partnerships to provide innovative, adaptive solutions to Walla Walla's complex water allocation challenges.

Objective 3.1: Build and maintain working relationships with partners, stakeholders and governments to improve basin capacity for innovation and collaboration in problem-solving .

***Proposed draft strategic action 3.1a:* Participate in events that will encourage relationship building and understanding among the constituents of the groups represented by the Board members.**

***Proposed draft strategic action 3.1b:* Convene the PAG once per year to review the effectiveness, completeness and current appropriateness of the Goals and Objectives.**

Objective 3.2: Secure funding to support Walla Walla Watershed Management Partnership operations, implementation of strategic actions, and leverage resources for watershed projects .

***Proposed draft strategic action 3.2a:* Develop a three-year and a nine-year Partnership Budget and staff workplan with project specific plans.**

***Proposed draft strategic action 3.2b:* Identify reliable sources of funding and/or grant sources, and submit funding proposals that support Partnership program goals.**

Objective 3.3: Demonstrate success in modeling collaborative, local water management under RCW 90.92 .

***Proposed draft strategic action 3.3:* Evaluate success of piloting the authorities through survey of partners, stakeholders, ECY, WDFW and Tribes, and reporting results to legislature and basin partners, while incorporating suggestions for improvement. Ultimately, develop recommendations on the future of the board for submission to legislature.**

Proposed Draft Strategic Actions

Goal 4: Educate water users and stakeholders about unique Partnership programs for water management.

Objective 4.1: Develop and implement a communications and outreach plan for Partnership programs.

Proposed draft strategic action 4.1: Develop and make broadly available a water user informational brochure on creative water management opportunities, maintain website, quarterly newsletter, provide progress reports, presentations to target audiences.

Objective 4.2: Partner to improve community education and public information on water management.

Proposed draft strategic action 4.2a: Assist stakeholders in dealing with outside agencies.

Proposed draft strategic action 4.2b: Develop a dedicated location in the Partnership newsletter for stories and information from other organizations and actively request articles from all identified entities.

Proposed draft strategic action 4.2c: Position staff and Board members to contribute information on Partnership programs and general water management issues in community forums, panels, and presentations.

Next Steps: Strategic Action Planning

- Partnership Board report from PAG at June 1, 2010 meeting; Water Resource Panel to convene in May/June with discussion of draft strategic actions; next PAG meeting to be scheduled for June/July 2010 for additional work on draft strategic actions.
- Through September 2010, Partnership Board will consider work by the PAG to develop the strategic action plan, including draft strategic actions, within a planning framework that includes a vision for the Partnership, agreed-upon goals with strategies for implementing various aspects of the legislation in the planning area, and a work plan to achieve Partnership success.

Strategic Action Planning

- ✓ **March 2010** Finalize approach, create timeline for review/approval
- ✓ **03/24/2010 PAG meeting:** Draft vision; initiate discussion on goals/objectives based on strengths/weaknesses/opportunities/threats; didn't get into parameters for focus/success
- ✓ **04/06/2010 Board meeting:** Review/approve working vision
- ✓ **04/26/2010 PAG meeting:** Discuss draft goals/objectives, parameters for focus and measures of success; discuss early aspects of strategic action planning; homework assigned
- ✓ **05/04/2010 Board meeting:** Update Board on progress in goals & objectives, parameters for focus and success; convene another PAG meeting on May 17th
- ❑ **May 17, 2010 PAG meeting:** Review homework on vision statement and goals/objectives, parameters for focus and success, intro to draft strategic actions
- ❑ **May/June 2010** WRP meeting (date to be determined) to discuss draft strategic actions
- ❑ **06/01/2010 Board meeting:** Board action to approve revisions to working vision statement, working goals and objectives, elements of focus and working metrics of success; discuss draft strategic actions
- ❑ **June 2010** Staff compile draft strategic action plan and collect additional feedback
- ❑ **07/06/2010 Board meeting:** Review of draft Strategic Action Plan
- ❑ **July/Aug 2010 PAG meeting** Finalize Strategic Action Plan; staff dissemination for final review
- ❑ **09/07/2010 Board meeting:** Approval of Strategic Action Plan with draft strategic actions